

DRAWING NUMBER  
**56/4**

DRAWING NUMBER

DRAWING NUMBER

DRAWING NUMBER

# SANDPIPER COVE P.U.D.

A PORTION OF SECTION'S 18 AND 19 TOWNSHIP 45 SOUTH, RANGE 43 EAST

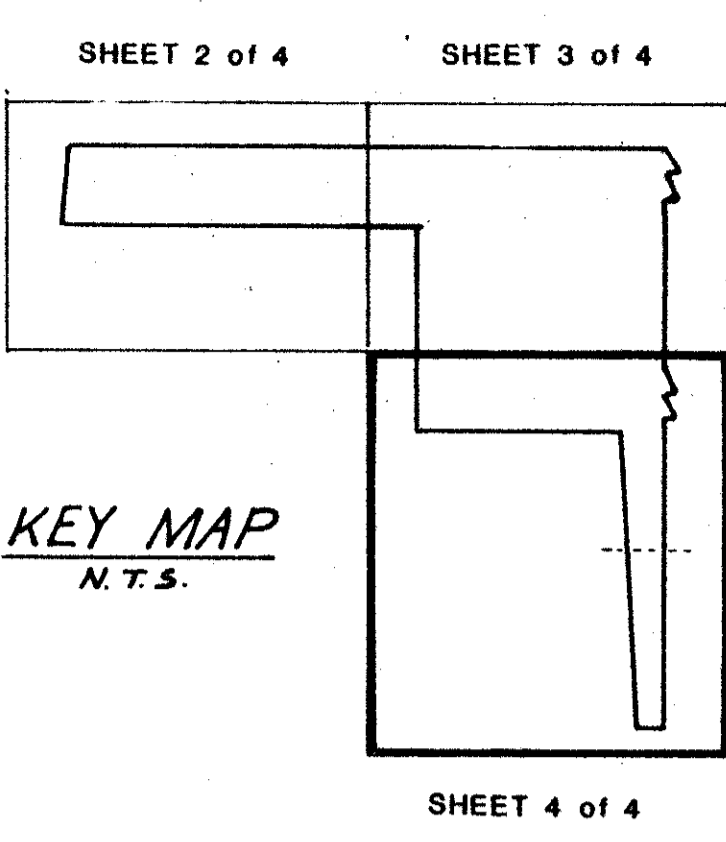
PALM BEACH COUNTY, FLORIDA  
IN 4 SHEETS SHEET NO. 4

Post, Buckley, Schuh & Jernigan, Inc.

CONSULTING ENGINEERS and PLANNERS  
8600 N. W. 36th STREET MIAMI, FLORIDA 33166 1-305-592-7275



DECEMBER 1986



STATE OF FLORIDA  
COUNTY OF PALM BEACH

THIS PLAT WAS FILED  
FOR RECORD AT \_\_\_\_\_ M.,  
THIS \_\_\_\_\_ DAY OF \_\_\_\_\_, 1987,  
AND DULY RECORDED IN  
PLAT BOOK NO. \_\_\_\_\_ ON  
PAGE \_\_\_\_\_

JOHN B. DUNKLE  
CLERK CIRCUIT COURT

BY: \_\_\_\_\_ D.C.

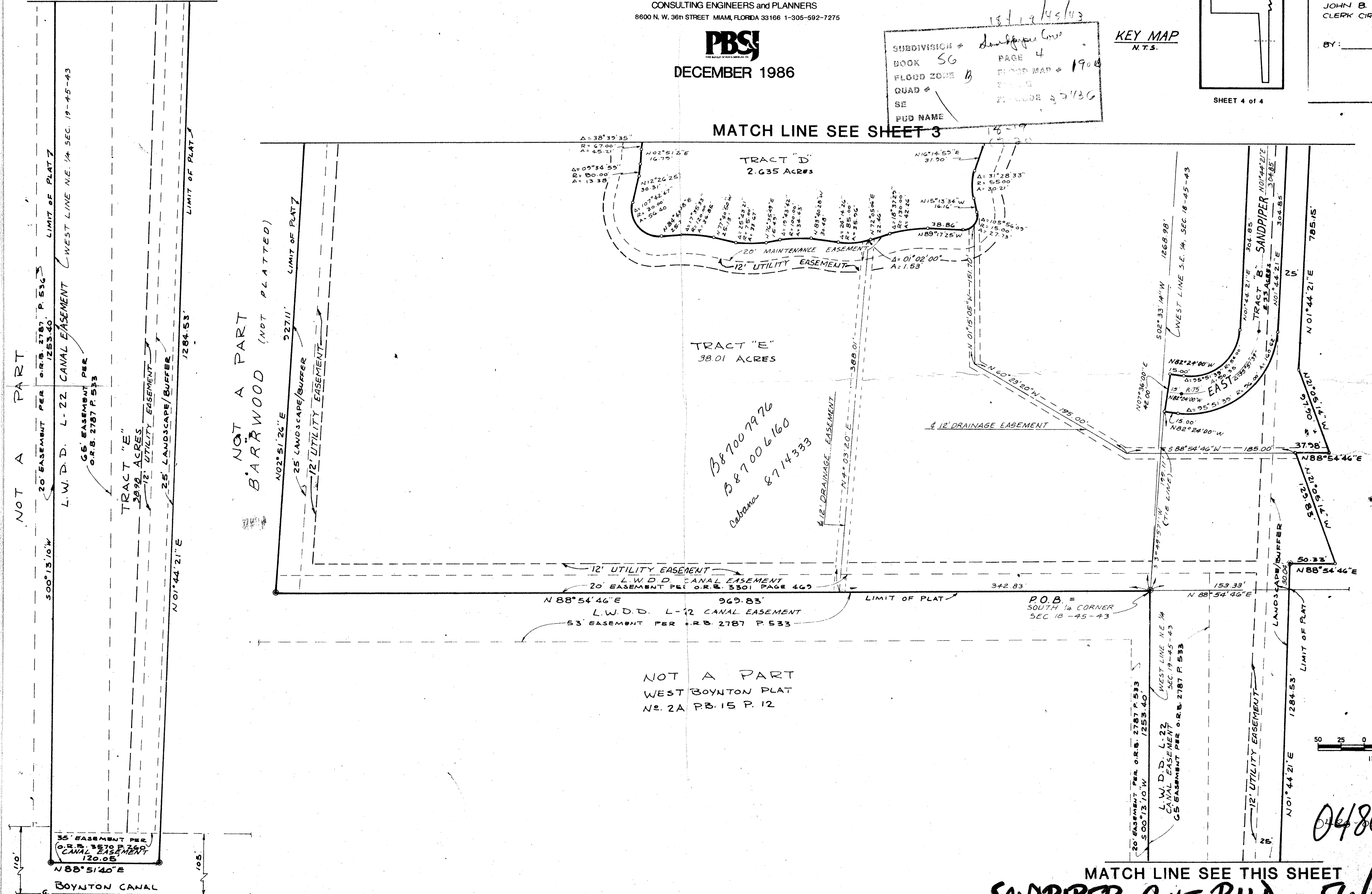
**4**

MATCH LINE  
SEE THIS SHEET

MATCH LINE SEE SHEET 3

MATCH LINE SEE THIS SHEET

**SANDPIPER COVE P.U.D. 56/4**



NOT A PART  
BARRWOOD (NOT PLATTED)

NOT A PART  
SAND AND SEA MOBILE HOME PARK  
NOT PLATTED

NOT A PART  
WEST BOYNTON PLAT  
No. 2A PB. 15 P. 12

*Handwritten notes:*  
B87007976  
B87006160  
Cubana 8714333

**0480-000**

PLAN HOLD CORPORATION • IRVINE, CALIFORNIA  
REGISTERED NUMBER 07548